

CONTROL PANELS

KSeries

EN 50131 / GRADE 2 / CLASS 2



K4

4 - 12 zones

split double, triple EOL
+ 2 zones for each keypad*
(max 4 zones)

K8

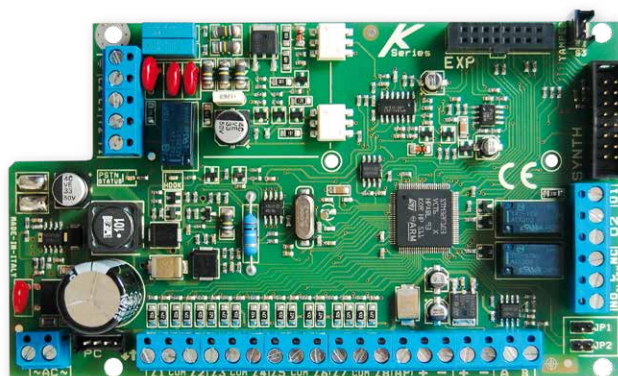
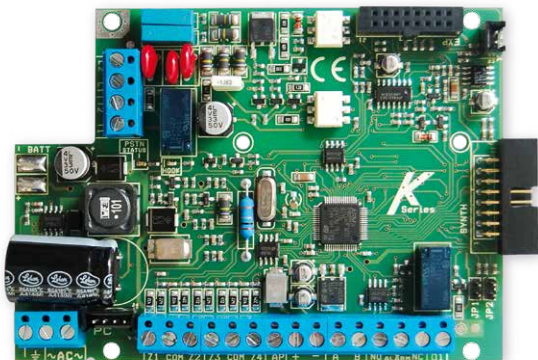
8 - 24 zones

split double, triple EOL
+ 2 zones for each keypad*
(max 8 zones)

K8plus

8 - 64 zones

double, triple EOL



GPRS/3G/4G
module

IP
module

Multisplit zones
K4 - K8 (without expansions)

BUS line
(4 wires) RS485



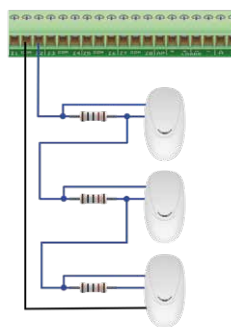
Hybrid system
(wired and wireless input)

PSTN
on board



CMS
multiformat

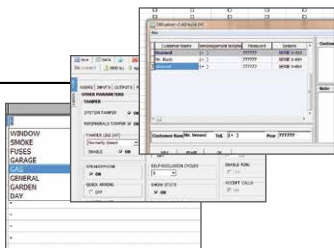
- 1 zone with single / double / triple EOL
- 2 zones with tamper protection
- **3 zones**
- many other configurations



iOS/Android APP
AMCPlus



AMC
YOUR SECURITY CHOICE



Settable by PC



amcelettronica.com

The **K Series** are security control panels for building protection; hybrid system (wired and wireless input); EN 50131, Grade 2, Class 2 approved. The control panel is equipped of 4/8 zones, expandable to 16/64. It is possible to obtain more zones by double and triple EOL split line (K4-K8). K Series are able to notify one or more situations of ALARM, ROBBERY, TAMPERING and TROUBLE with different carriers:

- **PSTN LINE on board** (voice beep calls**, Contact ID, SIA fsk, etc.)
- **GPRS/3G/4G module** (voice beep calls**, SMS, Contact ID, DC09 IP protocol for Contact ID and SIA IP)
- **IP module** (DC09 IP protocol for Contact ID and SIA IP)

** The K Series has not voice synthesis, the calls are made with beeps

The panel can be controlled by the App AMC Plus (iOS / Android) with IP module and/or GPRS/3G/4G module. The programming can be made with keypad and/or PC software. The programming with software can be made remotely with IP module and/or GPRS/3G/4G module.



Technical Features	K4	K8	K8 Plus
ZONES	4 - 12 zones split double, triple EOL +2 zones for each keypad* (max 4 zones)	8 - 24 zones split double, triple EOL +2 zones for each keypad* (max 8 zones)	8 - 64 zones double, triple EOL
WIRELESS ZONES	64 zones	64 zones	64 zones
OUTPUTS	1 on board - expandable to 8 (with expansions or keypads)	2 on board - expandable to 8 (with expansions or keypads)	2 on board - expandable to 17 (with expansions or keypads)
USER CODE	32	32	64
AREAS	4	4	8
GROUPS	4	4	4
KEYPADS	4	4	8
TAG READER	4	4	8
LOG EVENTS	1000	1000	1000
PHONE NUMBERS	8 for SMS and private calls + 8 for CMS	8 for SMS and private calls + 8 for CMS	8 for SMS and private calls + 8 for CMS
CARRIERS	PSTN on board, GPRS/3G/4G module, IP module	PSTN on board, GPRS/3G/4G module, IP module	PSTN on board, GPRS/3G/4G module, IP module
REMOTE MANAGEMENT IP - GPRS/3G/4G	by App (iOS - Android)	by App (iOS - Android)	by App (iOS - Android)
REMOTE PROGRAMMING IP - GPRS/3G/4G	by PC software	by PC software	by PC software
TIMERS	4 per day week	4 per day week	4 per day week

* Keypads with zones are Unika, K-lcd Blue, K-lcd Blue Tag, K-lcd Light Plus